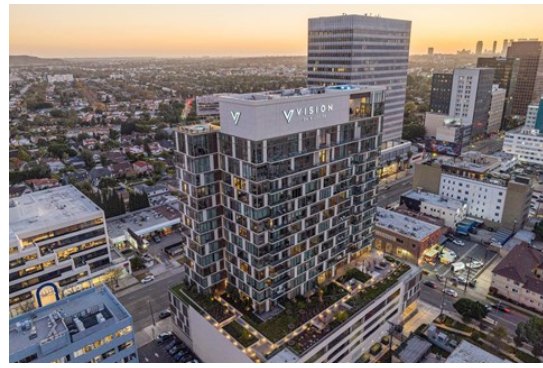


Vision on Wilshire
 6245 Wilshire Blvd
 Los Angeles, CA 90048
 visiononwilshire.com



Apartment Expenses

Estimated One-Time Charges

Application Fee (per adult applicant):	\$52.08
Admin Fee:	\$0
Deposit starting at (or \$0 with Rhino)**:	\$625

Pets

Dog

Maximum Pets:	2
Maximum Weight (per pet):	None
Pet Deposit (or \$0 with Rhino)**:	\$99
Pet Charge (per pet, non-refundable):	\$0
Pet Rent (per pet):	\$75/month

Cat

Maximum Pets:	2
Maximum Weight (per pet):	None
Pet Deposit (or \$0 with Rhino)**:	\$99
Pet Charge (per pet, non-refundable):	\$0
Pet Rent (per pet):	\$75/month

Pet Restrictions Acceptable animals include domestic cats and dogs. Dogs that are purebreds or mixes of the following breeds are prohibited: Akita, Alaskan Malamute, Chow-Chow, Doberman, German Shepherd, Great Dane, Pit Bull (American Staffordshire Terrier, American Pit Bull Terrier, Staffordshire Bull Terrier), Rottweiler, Saint Bernard, Shar Pei, and Siberian Husky. All other animals including exotic pets are prohibited. All animals must be authorized by management.

Parking

Compact Car Parking - Reserved:	\$265/month
Motorcycle Parking:	\$50/month
Parking Garage - Reserved:	\$275/month
Tandem Parking - Reserved:	\$420/month
Valet Parking:	\$150/month

Storage

Storage:	\$200/month
-----------------	-------------

Additional Services

RentTrack:	\$6.95/month
Liability Insurance**:	\$13/month
Package Lockers:	\$5/month \$20 sign-up

Utilities ‡

Water/Sewer:	\$71/month
Gas-Central Boiler:	\$30/month
Trash:	\$27/month
Electricity:	\$80/month

Special Offer

Limited time offer: Save up to 6 Weeks off rent! Move in by 02/17/2025. Minimum 13 month lease term required. *Select apartments

Restrictions apply. Additional details can be found at visiononwilshire.com

* This estimate is not a quote. Other fees may apply. Fees, application requirements, and leasing information are subject to change.

** Prior to move in, applicants must provide a renter's insurance policy which contains at least \$200,000 in Personal Liability Insurance. Applicants can conveniently purchase renters insurance from our preferred provider eRenterplan.com. Until you provide us proof that you have obtained a personal renter's insurance or liability insurance policy with \$200,000 in liability coverage for the duration of your lease, we will procure liability-only insurance coverage on your behalf and you will be charged \$13.00 per month as additional monthly rent. *Affordable Housing Applicants are exempt from this rule.

*** To learn more about the Deposit free with Rhino program. visit sayrhino.com.

‡The estimated monthly utility charges provided above are estimates based on the best information available to us over a 12 month period and are subject to change. The estimates provided do not necessarily reflect your actual monthly charges. The amount you pay for utilities each month will vary based on a variety of factors, including, but not limited to, the size of your home, the number of occupants, personal consumption habits, weather, and utility rate changes. Your lease details which utilities will be billed by us and which will be billed directly by the utility provider.